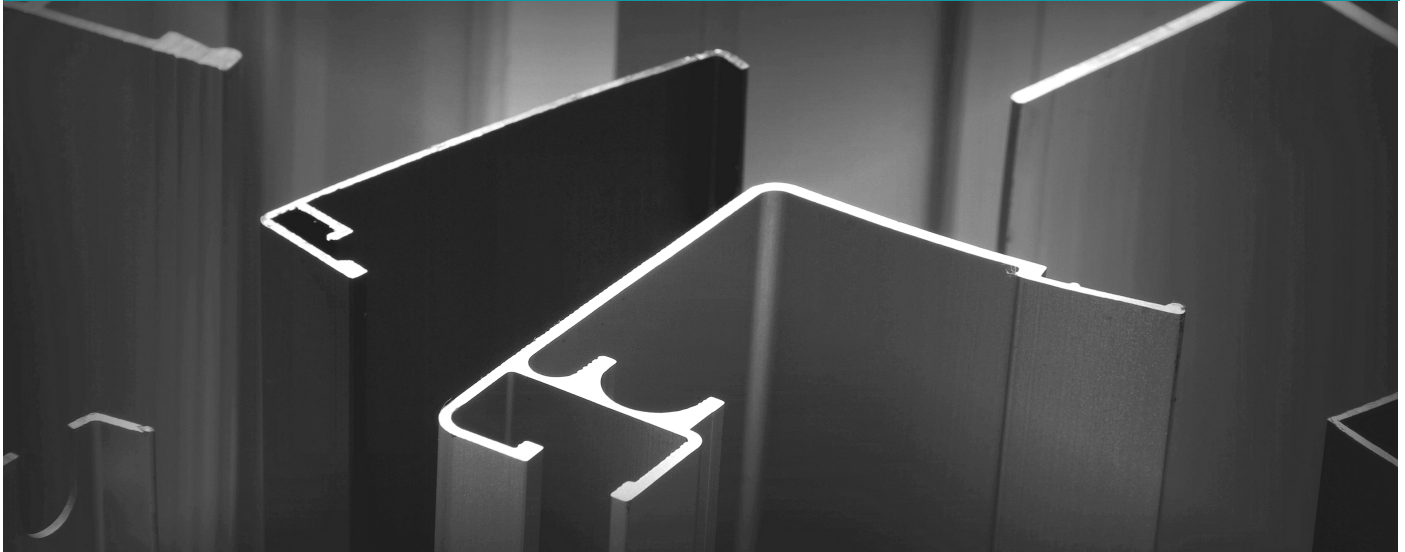


Bespoke Aluminium Extrusions

Smiths Profiles

Rev: Smiths_Profiles/info_sheet/bespoke_extrusions/feb-2022

Pages: 1 of 1



A stockholder of high-quality bespoke aluminium extrusions

Smiths Profiles is a specialist supplier and stockholder of bespoke aluminium extrusions. When you purchase extrusions from us, you receive stock from one of the UK's leading design, production, and distribution companies. Our team is drawn from the aluminium extrusion industry and has a length of experience second to none.

Industry-leading business systems

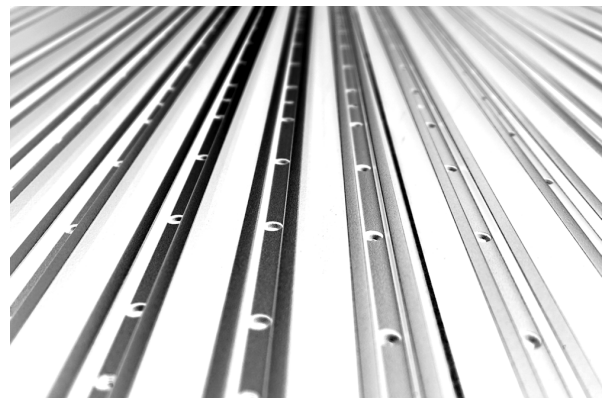
Our management system is bespoke and designed with quality at its core. Our products are entirely traceable at every stage of the supply process. With a fully embedded quality management system, you can be assured that we offer you the highest levels of quality and customer care.

Availability & Fulfilment

We hold a large stock of high-quality aluminium products available for immediate supply. We also have the flexibility to offer your business bespoke supply solutions. Our solutions improve supply chain efficiency and delivery performance while reducing costs. Our solutions are instantly scalable and explicitly designed to suit your requirements.

What we offer...

- Extensive, transparent stockholding
- Immediate supply
- Complete traceability
- Bespoke supply packages
- Industry leading systems



ALUCOBOND®

Cassette SZ20 System

For full details please view additional information on the reverse of this page.

Bespoke Aluminium Extrusions

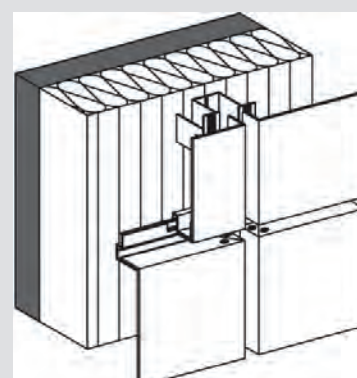
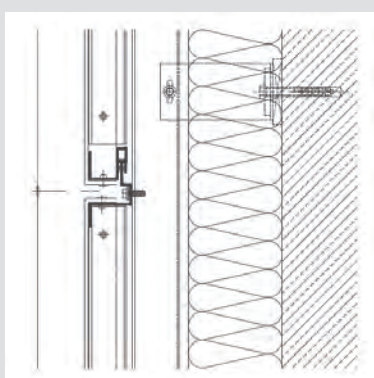
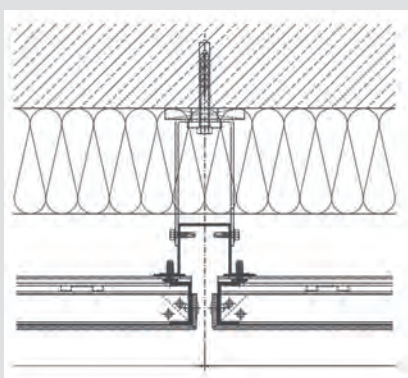
Smiths Profiles

ALUCOBOND®

Cassette SZ20 System

For horizontal facade structuring to partner 3A Composites | ALUCOBOND®

- Approval: British Board of Agrément (BBA) certified
- Alloy: EN755 EN AW-6063
- Temper: T6
- Finish: Mill finish



Available Sections:

- "T" Section (100 x 45mm)
- Top Hat Section (50 x 50mm)
- Anti Rattle Clips
- Starter Bar (46mm system)
- Z Profile (46mm system)
- S Profile (46mm system)



www.smithsprofiles.com

sales@smithsprofiles.com



Arle Court, Hatherley Lane
Cheltenham, Gloucestershire
GL51 6PN

Tel: +44 (0) 1242 41380

Quality Management

Smiths Profiles operate an ISO 9001 approved quality management system. Our quality management system (QMS) is fully embedded in our industry-leading bespoke IT platform.